

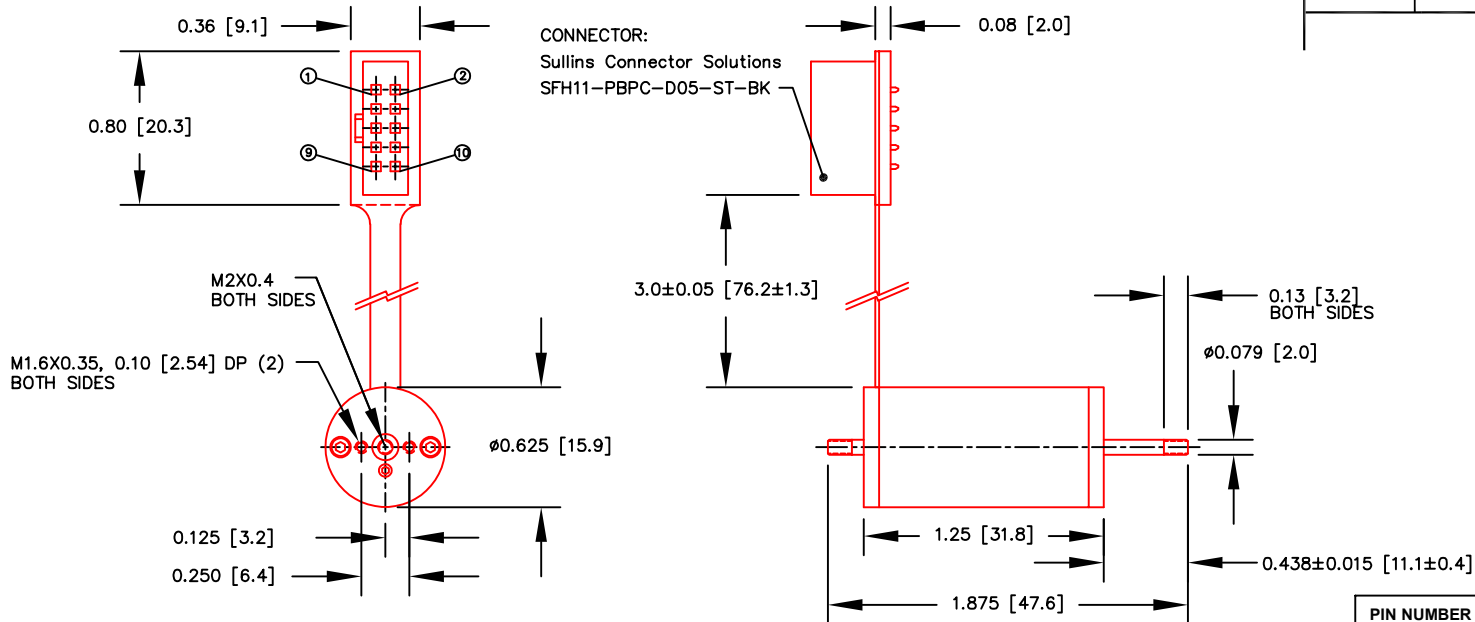
4

3

2

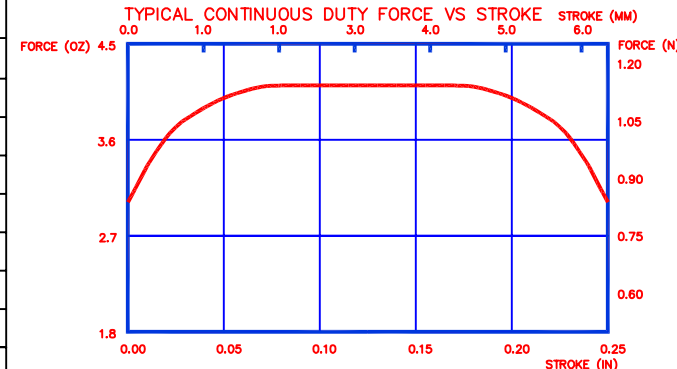
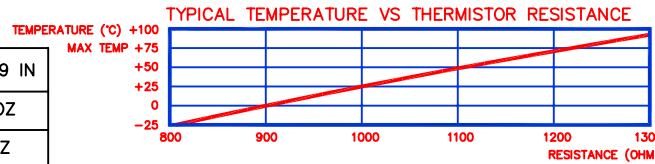
1

SHOWN IN FORWARD EXTENDED SHAFT POSITION



REVISIONS					
ZONE	LETTER	DESCRIPTION	DATE	CHECKED	APPROVED

ENCODER RESOLUTION	1.25 µm	0.000049 IN
INTERMITTENT FORCE @10% DUTY CYCLE	3.61 N	13.0 OZ
CONTINUOUS FORCE	1.14 N	4.1 OZ
FORCE CONSTANT	1.08 N/A	3.9 OZ/A
BACK EMF CONSTANT	1.08 V/M/S	0.027 V/IN/S
STROKE	6.35 mm	0.250 IN
MOVING MASS	4.6 GR	0.16 OZ
TOTAL MASS	31 GR	1.1 OZ
COIL RESISTANCE	2.7 Ohms	
COIL INDUCTANCE @ 1000 Hz	0.45 mH	
MAX CONTINUOUS POWER	3.0 W	
MAX TOTAL SHAFT SIDE LOAD	1.0 N	3.6 OZ
LINEAR BEARING TYPE	PLAIN BUSHING	



PIN NUMBER	DESCRIPTION
1	MOTOR PLUS
2	MOTOR MINUS
3	MOTOR PLUS
4	MOTOR MINUS
5	THERMISTOR RELATIVE TO RETURN
6	NOT CONNECTED
7	CHANNEL B OUTPUT OF OPTICAL ENCODER
8	CHANNEL A OUTPUT OF OPTICAL ENCODER
9	RETURN FOR OPTICAL ENCODER AND THERMISTOR
10	+3.3 TO +5 VDC POWER FOR OPTICAL ENCODER

THIS DOCUMENT, WHETHER OR NOT MARKED AS PROPRIETARY, IS CONSIDERED CONFIDENTIAL AND SHALL REMAIN THE PROPERTY OF MOTICONT AND SHALL BE RETURNED TO MOTICONT UPON REQUEST WITH ALL COPIES MADE THEREOF. THIS DOCUMENT CANNOT BE UTILIZED IN THE MANUFACTURE OF ARTICLES SOLD OR OFFERED OR DISCLOSED TO ANYONE AND NO USE OF IT CAN BE MADE UNLESS EXPRESSLY AUTHORIZED BY AND UNDER THE DIRECTION OF MOTICONT. POSSESSION OF THIS DOCUMENT IS ACCEPTED SUBJECT TO THE FOREGOING.

3-MOTOR MAY BE SUPPLIED WITH OPTIONAL SPRINGS.
 2-FOR PROPER HEAT DISSIPATION, THE MOTOR SHOULD BE MOUNTED ON A METALLIC BODY WITH ADEQUATE SURFACE AREA IN AN UNRESTRICTED FLOW OF AIR. MAX OPERATING TEMPERATURE: 75°C
 1-ALL VALUES AT 25°C

NOTES:
 UNLESS OTHERWISE SPECIFIED

DIMENSIONS ARE IN INCHES [mm]		
TOLERANCES ON:		
DECIMALS	FRACTIONS	ANGLES
.XXX	.XX	± 1/125 ± 1/2°
± .005 ± .01 UNLESS OTHERWISE SPECIFIED		
USED ON	NEXT ASSY	
APPLICATION		

MATERIAL	CONTRACT
FINISH	DRN
	CHKD
	APPVD
	APPVD

MOTICONT			
LINEAR DIRECT DRIVE SERVO MOTOR WITH BUILT-IN ENCODER			
SIZE	CODE	DWG. NO.	REV.
A		SDLM-016-032-01-01M	1
SCALE: 1 / 1		SHEET 1 OF 1	

4

3

2

1